

MAKE A PAYMENT

- Go to: www.bennett.edu
- Scroll down to the bottom of the page, select Belenet
- Enter: Student user name and password
- Click: Finances Tab
- Click: Student Finances
- Scroll down to My Account Info
- Click: My Account Balance
- Click: Make a Payment
- Enter: Amount to Pay and click Submit
- Credit card button appears, click Continue
- Enter: Credit/Debit card information

REVIEW FINANCIAL AID STATUS

Go to: www.bennett.edu

- Scroll down to bottom of page, select Belenet
- Enter: Student username and password
- Click: Finances Tab
- Click: NetPartner Student
 - View awards
 - View accept awards
 - View documents
 - View messages
 - View loans
 - View loan history
 - View disbursements (**As of Date indicates that awards have posted to account**)
 - View lifetime awards

SET-UP TUITION PAYMENT PLAN

- Go to: www.bennett.edu
- Select: Quick Links
- Click: Tuition Payment Plan
- Follow instructions to complete the process

APPLY FOR DEBIT CARD/STUDENT REFUND

- Go to: www.bennett.edu
- Select: Quick Links
- Click: Student Refund
- Click: Get Your Refund Here

SUBMIT HEALTH INSURANCE WAIVER

- Go to: www.bennett.edu
- Select: Quick Links
- Click: Student Insurance Waiver
- Follow instructions to complete the process

CONTACT INFORMATION

- Business Office
 - Student Accounts Coordinator, 336-517-2121
 - Bursar, 336-517-2110
- Information Technology Services, 336-517-1479
- Payment Plan, 336-517-2110
- Debit Card, 877-346-2756

STUDENTS:

PLEASE READ YOUR BENNETT COLLEGE E-MAIL FOR OFFICIAL INFORMATION FROM VARIOUS OFFICES OF THE COLLEGE.

To access your e-mail account, go to www.bennett.edu, scroll down to the bottom of the page, and select BelleMail

Enter: Your username and password

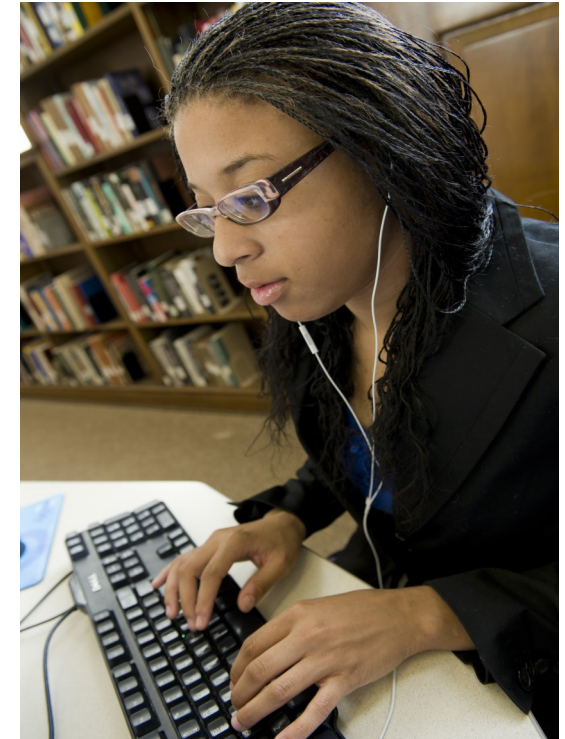
If you do not know your BelleMail or Belenet sign-on or are having problems accessing BelleMail or BelleNet, please visit the Online Helpdesk (go to www.bennett.edu, scroll down to the bottom of the page, and select Online Helpdesk) and submit a ticket.

PLEASE CHECK YOUR STUDENT ACCOUNT, FINANCIAL AID STATUS AND OTHER INFORMATION ON BELLENET DAILY.

Bennett College is accredited by the Southern Association of Colleges and Schools Commission on Colleges (SACSCOC), 1866 Southern Lane, Decatur, GA 30033, 404-679-4500; www.sacscoc.org; the National Council for Accreditation of Teacher Education (NCATE) and Council on Social Work Education (CSWE).



Business Office



ONLINE SERVICES

Race Hall
900 East Washington Street
Greensboro, NC 27401

Phone: 336-517-2121
Fax: 336-370-8971
E-mail: studentaccounts@bennett.edu



Bennett College is a
United Methodist Church-related Institution

ONLINE SERVICES

REVIEW STUDENT ACCOUNT

You have access to review your billing statement to determine transactions (charges, financial aid, payments, refunds and adjustments) posted to your account. The net of all transactions represents your accounts receivable balance (bottom of page). If the balance is positive (no parentheses), the amount is owed/due to the College. If the balance is negative (parentheses), the amount is owed/due to the student. The history version of the billing statement contains all transactions posted to your account. This version may contain pending transactions which represent preliminary charges and/or anticipated financial aid for an upcoming semester. The condensed account statement contains a beginning balance and detailed transactions for a defined period. This version will also contain preliminary charges and/or anticipated financial aid for an upcoming semester. The anticipated financial aid is denoted with an asterisk (*). Students are encouraged to review their account on-line frequently to determine their financial obligations to the College. **Your account balance will change as new transactions post to your account during the academic year.**

MAKE A PAYMENT

Students are encouraged to make payments on-line through Bellenet. This is a convenient way to pay by credit card. The College accepts Visa, MasterCard, Discover and American Express credit cards. Students are strongly encouraged to pay cost of attendance (tuition, fees, and room and board) and miscellaneous charges on-line.

FINANCIAL AID STATUS

Students are encouraged to access Bellenet to obtain the status of their financial aid awards. You will be able to accept or decline your financial aid awards package; view

documents that have been accepted or missing; view messages, current loans, loan history, pending disbursements and disbursements posted to the student account (**As of Date indicates that awards have posted to account**), and lifetime awards.

TUITION PAYMENT PLAN

Tuition payment plans are an interest-free way to break down your education expenses into easy-to-manage installments, rather than one lump-sum payment. Convenience is a key benefit of tuition payment plans. When you enroll in a tuition payment plan, you will create an account login, which allows you to access your account, view payment history, and update your personal information any time, day or night. You will be charged a non-refundable application fee. If you enroll in the tuition payment plan prior to June 15th, you will be eligible for a 10 month payment plan. The earlier you enroll, the longer the payment plan terms and the smaller your monthly installments. Payments are made automatically by debit/credit card or an electronic debit from your checking or savings account.

DEBIT CARD

The Sallie Mae No Fee Student Checking account with Debit MasterCard enables you to access your refunds same day with an open and activated account. You will be able to withdraw your cash from 35,000 ATMs nationwide without paying any fees. Manage your account worry-free with no annoying service charges or minimum balances. The debit card gives you the freedom to shop with ease, pay bills on-line and track disbursements. Use your debit card to make everyday purchases in stores and on-line, wherever MasterCard is accepted. You will have the ability to manage your account on-line 24 hours per day/7 days per week; view your balance, check transaction history and pay bills. Checking accounts are backed by the FDIC (Federal Deposit Insured Corporation) and also include MasterCard Zero Liability Protection on signature transactions.

HEALTH INSURANCE WAIVER

Here at Bennett, we strive to facilitate the completion of your academic career by promoting healthy lifestyles and caring for your physical and psychological illnesses and concerns. In choosing a student health insurance plan, Bennett is committed to offering insurance coverage that is affordable, accessible to ALL students regardless of a previous condition, has an unlimited lifetime maximum benefit and continues throughout the summer. The Bennett College plan is developed in accordance with the Federal Affordable Care Act. Students will be given the opportunity to apply for a waiver during the summer for the upcoming year. Any student who does not apply for the waiver or whose waiver is denied will be automatically enrolled in the plan for the year and the student account will be charged. A link to the Student Insurance Waiver can be found at www.bennett.edu under Quick Links.

REVIEW YOUR STUDENT ACCOUNT

- Go to: www.bennett.edu
- Scroll down to the bottom of the page, select Bellenet
- Enter: Student username and password
- Click: Finances Tab
- Click: Student Finances
- Scroll down to My Account Info
- For the Transaction History Statement Version
 - Click: My Account Balance
 - Click: Student Accts Rec \$\$\$\$ Amount
- For the Condensed Account Statement Version
 - Click: Course and Fee Statement
 - Click: Generate My Course and Fee Statement
 - Click: View My Course and Fee Statement
- To Print a Statement
 - Select File, in the upper left-hand corner of the screen
 - Click Print (statement prints on the printer) or Print View (statement prints on the screen)